

TECHNICAL DATA

Fluke Networks FiberLert™ Detector



Key features

- Detects optical power in SM and MM fiber (850 to 1625 nm)
- No setup or interpretation – light and sound indicate signal
- “Non-contact” detector reduces risk of contamination and damage
- Suitable for ports and patch cords, SM, MM, UPC and APC
- LightBeat™ feature indicates operation and battery status

Product overview: Fluke Networks FiberLert™ Detector



Quickly check fiber activity, polarity, and connectivity

Just place in front of the fiber end face or port and a light and tone indicate an active fiber (850 nm to 1625 nm) - no setup or interpretation required.

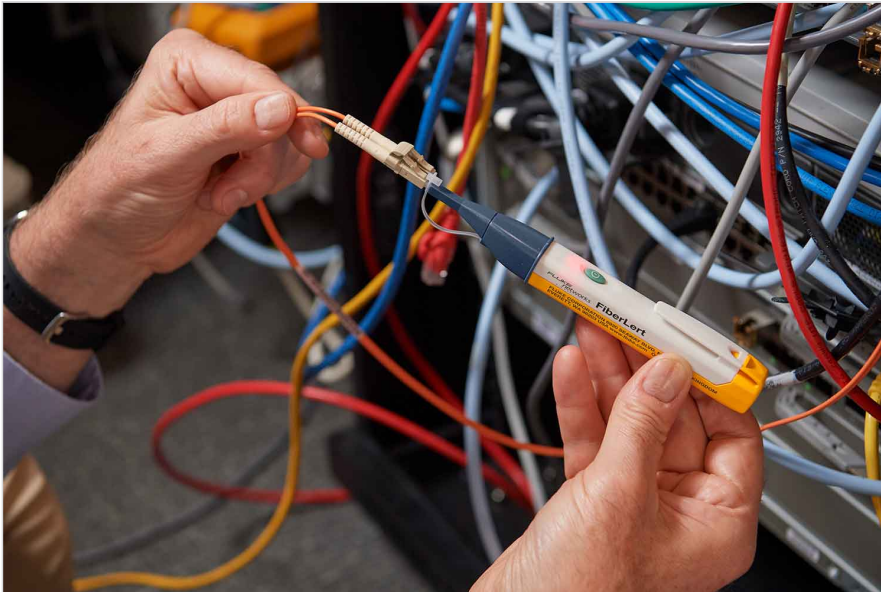
This pocket-sized tool tests:

- Single-mode
- Multimode
- UPC and APC patch cords
- Ports with a non-contact / non-contaminating detector

The LightBeat™ feature flashes the LED, indicating a powered-on condition and good battery and a timer shuts FiberLert™ Detector off after five minutes of inactivity to extend battery life (2xAAA, included). Rugged design includes a convenient pocket clip and is backed by a two-year warranty.

Specifications: Fluke Networks FiberLert™ Detector

Ordering information



FIBERLERT-125

FiberLert™ Detector

Includes:

- FiberLert™ Detector
 - Instruction card
 - 2 AAA batteries
-



Fluke. *Keeping your world up and running.®*

Fluke Corporation
PO Box 9090, Everett, WA 98206 U.S.A.

For more information call:
In the U.S.A. (800) 443-5853
In Canada (800) 36-FLUKE
From other countries +1 (425) 446-5500
www.fluke.com

©2025 Fluke Corporation.
Specifications subject to change without notice.
06/2025

**Modification of this document is not permitted
without written permission from Fluke
Corporation.**