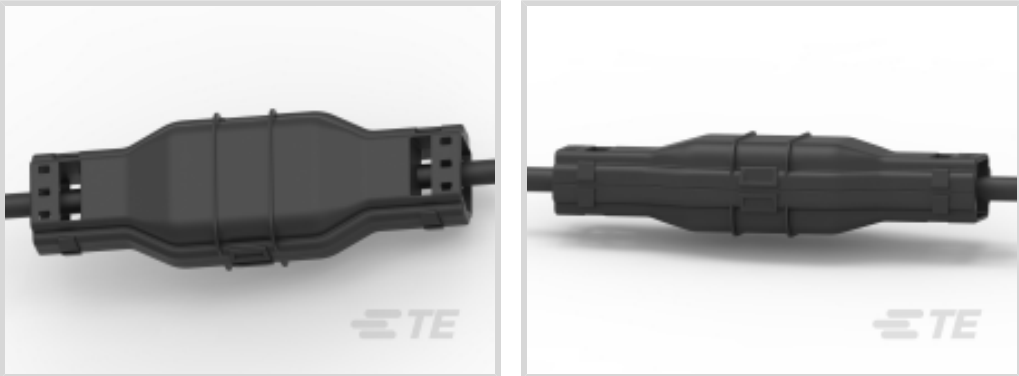




Energy & Power > Power Cable Accessories > Joints & Splices



Installation Technology: **Power Gel**
Product Availability: **Europe, Middle East & Africa**
Installation Instruction: **English**
Voltage Class: **≤ 1 kV**
Joints & Splice Product Type: **Inline Splice**

Features

Product Type Features

Joints & Splices Connector Type	Mechanical
Cable Sealing Method	Gel
Power Component Options	Mechanical Connectors Included
Filler	PowerGel
Shelf Life	Unlimited
Installation Technology	Power Gel
Joints & Splice Product Type	Inline Splice
Cable Shield Style	Inline
Closing Method	Snap

Configuration Features

Number of Main Wires (Max)	1
----------------------------	---

Electrical Characteristics

Voltage Class	≤ 1 kV
---------------	--------

Body Features

Primary Product Color	Black
-----------------------	-------

Dimensions

Width (Installed)	51 mm[2 in]
Length (Installed)	108 mm[4.25 in]



Compatible Conductor Cross-Section Range	50 – 150 mm²
Compatible Conductor Range	#2 – 4/0 AWG/kcmil

Usage Conditions

Operating Temperature Range	-40 – 90 °C
Environmental Resistance	Moisture, Protection Against Humidity, Rain, Self Sealing, Water Repelant, Weathering

Operation/Application

Mechanical Resistance	Against Mechanical Impact
UV-Stabilized	Yes

Industry Standards

Compatible With Approved Standards Products	ANSI C119.1
---	-------------

Product Availability

Product Availability	Europe, Middle East & Africa
----------------------	------------------------------

Packaging Features

Packaging Quantity	18
--------------------	----

Other

Product Use	PowerGel-filled box for LV underground & overhead inline splices.
Installation Instruction	English

Product Compliance

For compliance documentation, visit the product page on TE.com>

EU RoHS Directive 2011/65/EU	Compliant
EU ELV Directive 2000/53/EC	Compliant
China RoHS 2 Directive MIIT Order No 32, 2016	No Restricted Materials Above Threshold
EU REACH Regulation (EC) No. 1907/2006	Current ECHA Candidate List: JAN 2025 (247) Candidate List Declared Against: JAN 2021 (211) Does not contain REACH SVHC
Halogen Content	Low Halogen - Br, Cl, F, I < 900 ppm per homogenous material. Also BFR/CFR/PVC Free
Solder Process Capability	Not applicable for solder process capability



Product Compliance Disclaimer

This information is provided based on reasonable inquiry of our suppliers and represents our current actual knowledge based on the information they provided. This information is subject to change. The part numbers that TE has identified as EU RoHS compliant have a maximum concentration of 0.1% by weight in homogenous materials for lead, hexavalent chromium, mercury, PBB, PBDE, DBP, BBP, DEHP, DIBP, and 0.01% for cadmium, or qualify for an exemption to these limits as defined in the Annexes of Directive 2011/65/EU (RoHS2). Finished electrical and electronic equipment products will be CE marked as required by Directive 2011/65/EU. Components may not be CE marked. Additionally, the part numbers that TE has identified as EU ELV compliant have a maximum concentration of 0.1% by weight in homogenous materials for lead, hexavalent chromium, and mercury, and 0.01% for cadmium, or qualify for an exemption to these limits as defined in the Annexes of Directive 2000/53/EC (ELV). Regarding the REACH Regulation, the information TE provides on SVHC in articles for this part number is based on the latest European Chemicals Agency (ECHA) ‘Guidance on requirements for substances in articles’ posted at this URL: <https://echa.europa.eu/guidance-documents/guidance-on-reach>

Compatible Parts



TE Part # E25218-000
[GILS-350\(B18\)](#)


Customers Also Bought



TE Part #CS7743-000
[BCAC-G-IC-7D/12\(B6\)](#)



TE Part #CAT-WCSM
[Thick-Wall Heat Shrink Tubing](#)



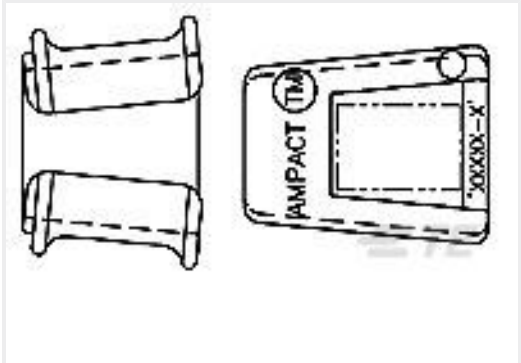
TE Part #566427-000
[GTAP-1\(B18\)](#)



TE Part #A90301-000
[BCAC-G-5D/8-01\(B12\)](#)



TE Part #A92884-000
[CRSM-84/20-1000\(B5\)](#)



TE Part #602013
[AMPACT Tap 336.4-4](#)



TE Part #1710723-6
[15kILD-KS9C-w/T-556.5](#)

Documents

[Datasheets & Catalog Pages](#)
[GILS RAYCHEM GEL IN-LINE SPLICE KIT](#)
English



Instruction Sheets

Instruction Sheet (U.S.)

English