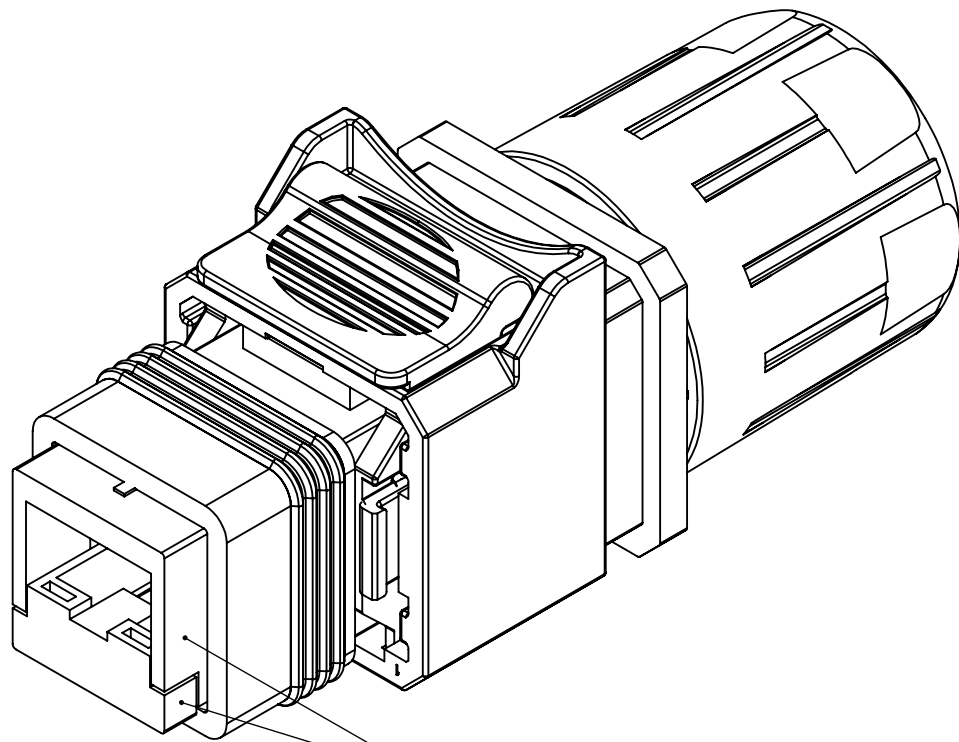
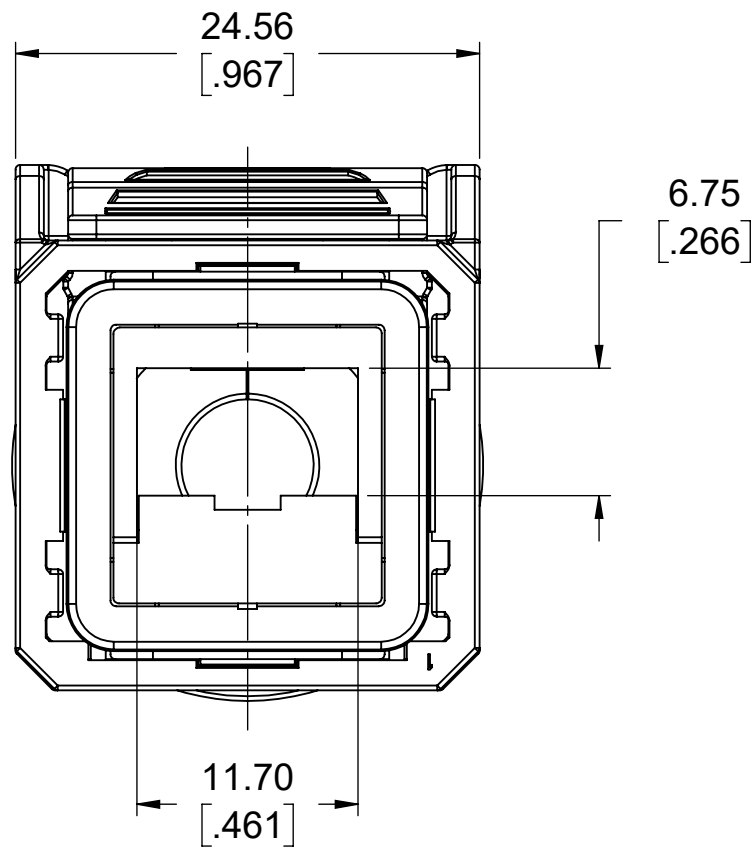
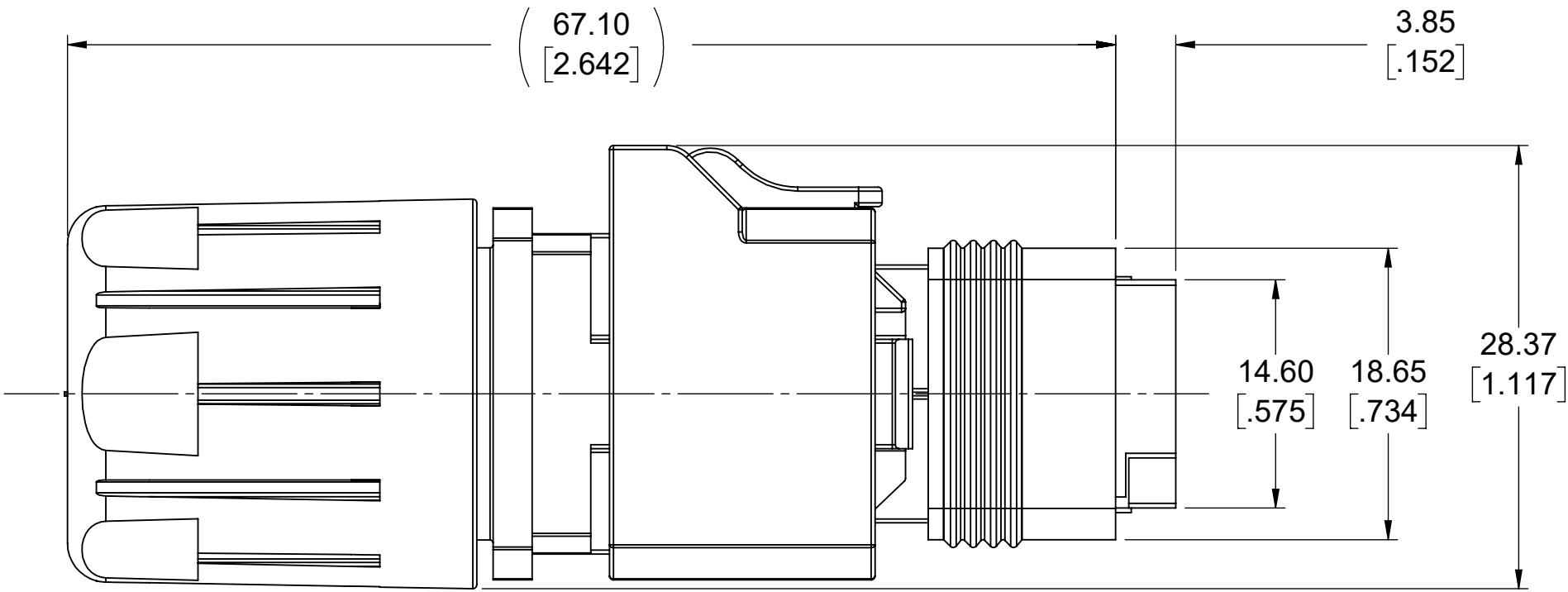
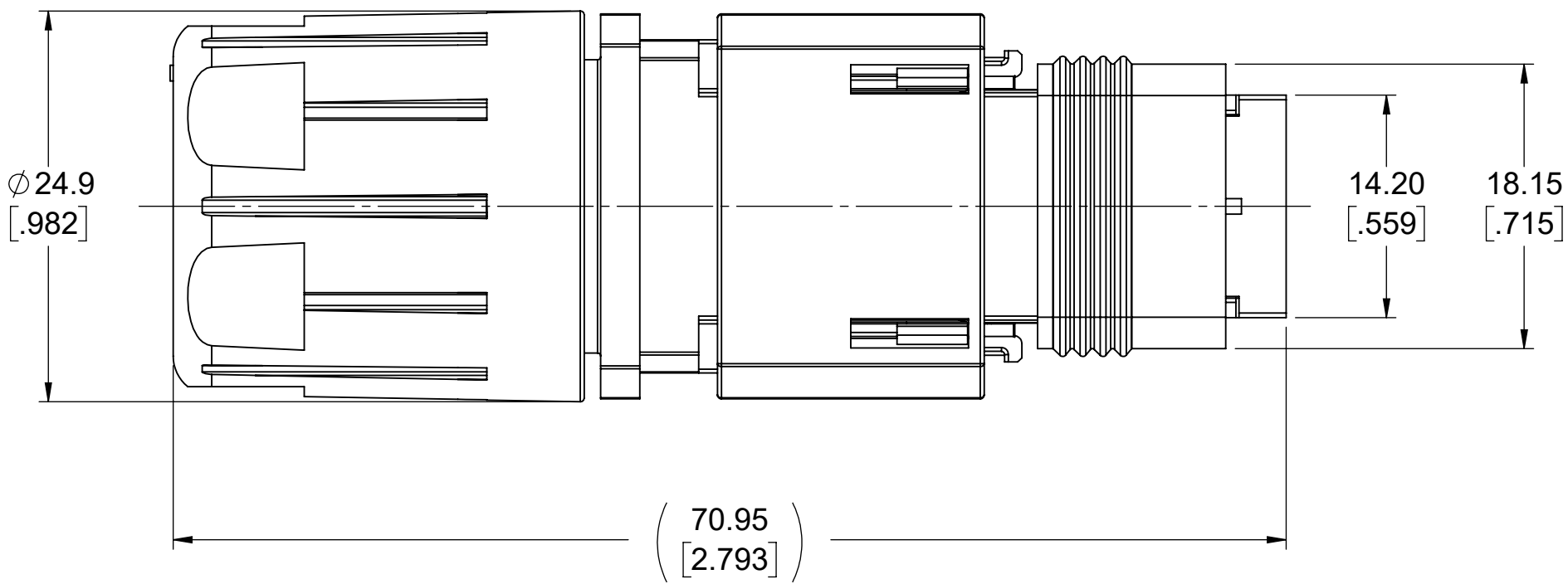


REVISIONS				
REV	DESCRIPTION	DATE	GUARDIAN	APPROVED
A	NEW DWG (EAR 14988)	JAN10/22		K. LAMBIE
B	NEW REV (EAR14988)	JUN27/24	R. D'AMICO	K. LAMBIE

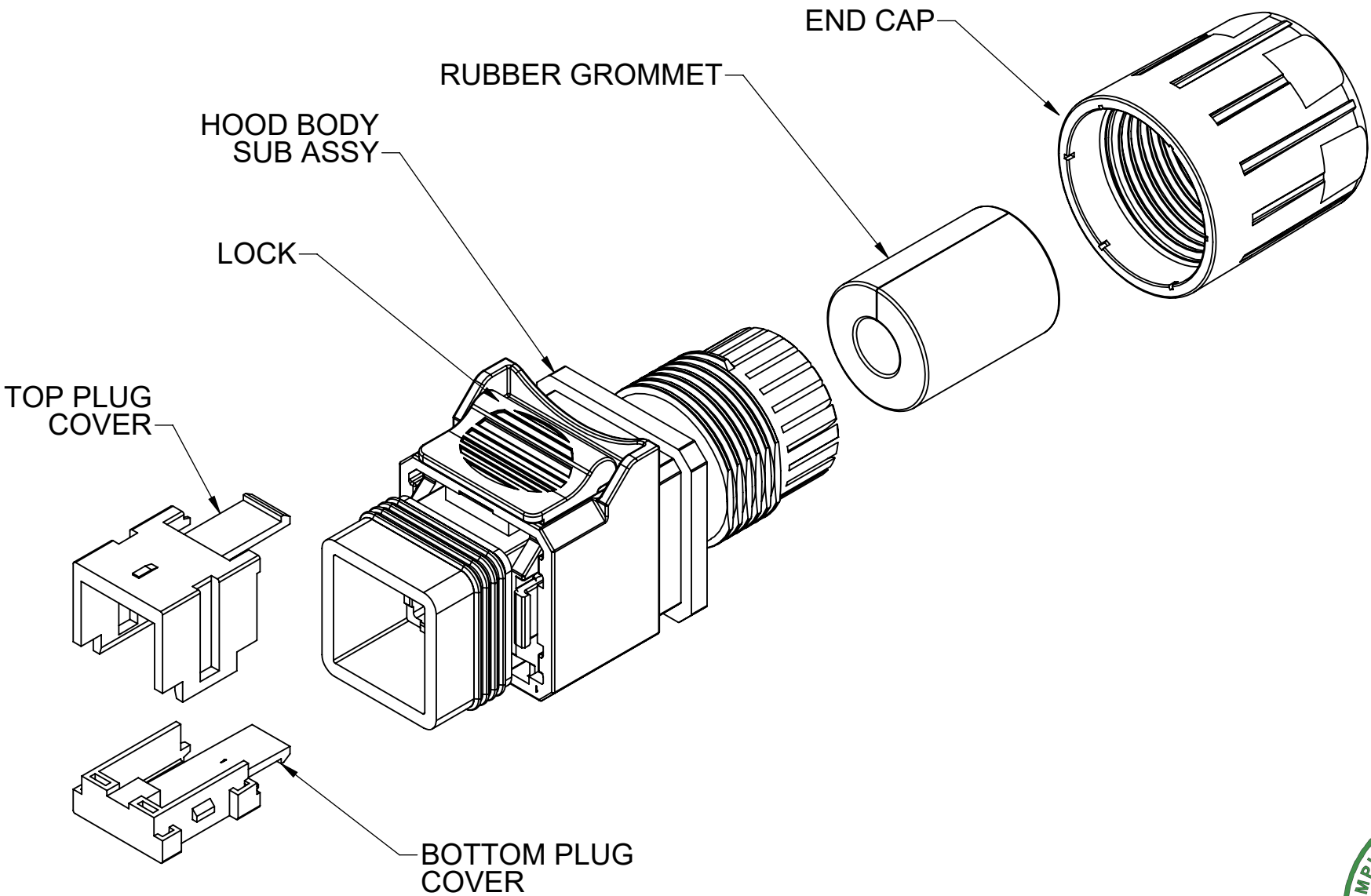


THE TOP & BOTTOM PLUG COVERS HAVE A POKE-YOKE FEATURE. THEY CAN ONLY BE ASSEMBLED ONTO THE PLUG AND INTO THE HOOD BODY IN ONE WAY.



NOTES:

- MATERIAL: RoHS COMPLIANT PER EU DIRECTIVE 2011/65/EU AND AMENDMENTS.
 - HOOD COVERS, BODY, SLIDE & END CAP : PBT GLASS REINFORCED, COLOUR: BLACK
 - HOOD LOCK: PBT GLASS REINFORCED, COLOUR: RED
 - GASKETS & GROMMET: SILICONE RUBBER, COLOUR: BLACK
- NDH HOOD FOR RJ45 CONNECTORS IS INTENDED FOR USE WITH MODULAR JACKS THAT HAVE PLUG TAB DOWN ORIENTATION. PLUGS MAY BE SHIELDED OR NON-SHIELDED. NOTE THAT SOME PLUG OVER-MOULDS OR BOOT DESIGNS MAY NOT BE SUITABLE.
- OPERATING TEMPERATURE -40° TO +80°C.
- NDH-R100 HOODS ARE PART OF AN IP67 SEALED SOLUTION WITH PUSH/PULL MATING FOR RJ45 ETHERNET APPLICATIONS. THE IP67 RATING APPLIES IN THE MATED CONDITION FOR BOTH THE ENCLOSURE AND THE MATING INTERFACE.
- FOR THE PCB MOUNTED MODULAR JACK, SEE AMPHENOL DRAWING P-RJE7H-188-0X10-R. THE JACK IS AN 8 CONTACT, SHIELDED, TAB DOWN, ULTRA LOW PROFILE, RIGHT ANGLE DESIGN CONNECTOR.
- FOR THE BULKHEAD, REFER TO AMPHENOL DRAWING P-NDH-N200.
- FOR PART NUMBERS WITH CABLE ASSEMBLY AND/OR BULKHEAD INCLUDED, REFER TO AMPHENOL DRAWINGS P-NDH-R4AX-AXXA AND P-NDH-R5AX-AXXA.



AMPHENOL PART NUMBER: NDH-R100



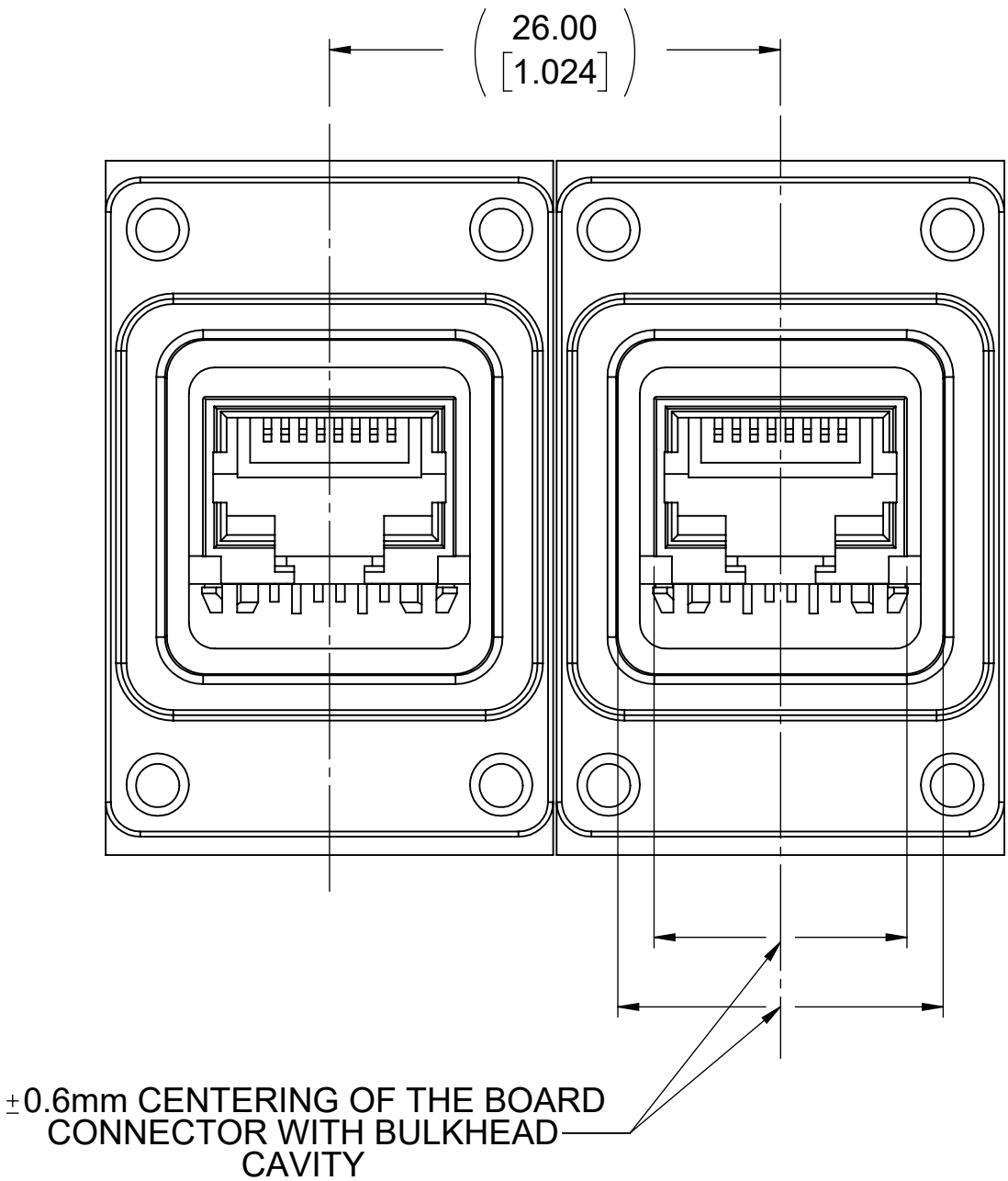
UNLESS SPECIFIED OTHERWISE		DRAWN	P.GOBUI	JAN07/22	Amphenol Canada Corp. Commercial Products			
PRIMARY UNITS	MILLIMETRES	CHECKED	K. LAMBIE	JAN10/22				
SECONDARY	INCHES	M.E. APP'D			NDH SERIES RJ HOOD KIT, TAB DOWN, IP67 RATING, RoHS COMPLIANT			
REFERENCE IN PARENTHESES		Q.A. APP'D						
GENERAL TOLERANCES		DWG APP'D			DWG. NO. P-NDH-R100			
1 DECIMAL PLACE		ENG NO.						
2 DECIMAL PLACES		RELEASE STATE			CODE ID NO. 03554 DWG SIZE: C SCALE: 2.5:1 SHEET 1 OF 2			
3 DECIMAL PLACES		THIRD ANGLE PROJECTION						
ANGULAR DEGREES		DO NOT SCALE DRAWING			REV B			

REVISIONS				
REV	DESCRIPTION	DATE	GUARDIAN	APPROVED
A	NEW DWG (EAR 14988)	JAN10/22		K. LAMBIE
B	NEW REV (EAR14988)	JUN27/24	R. D'AMICO	K. LAMBIE

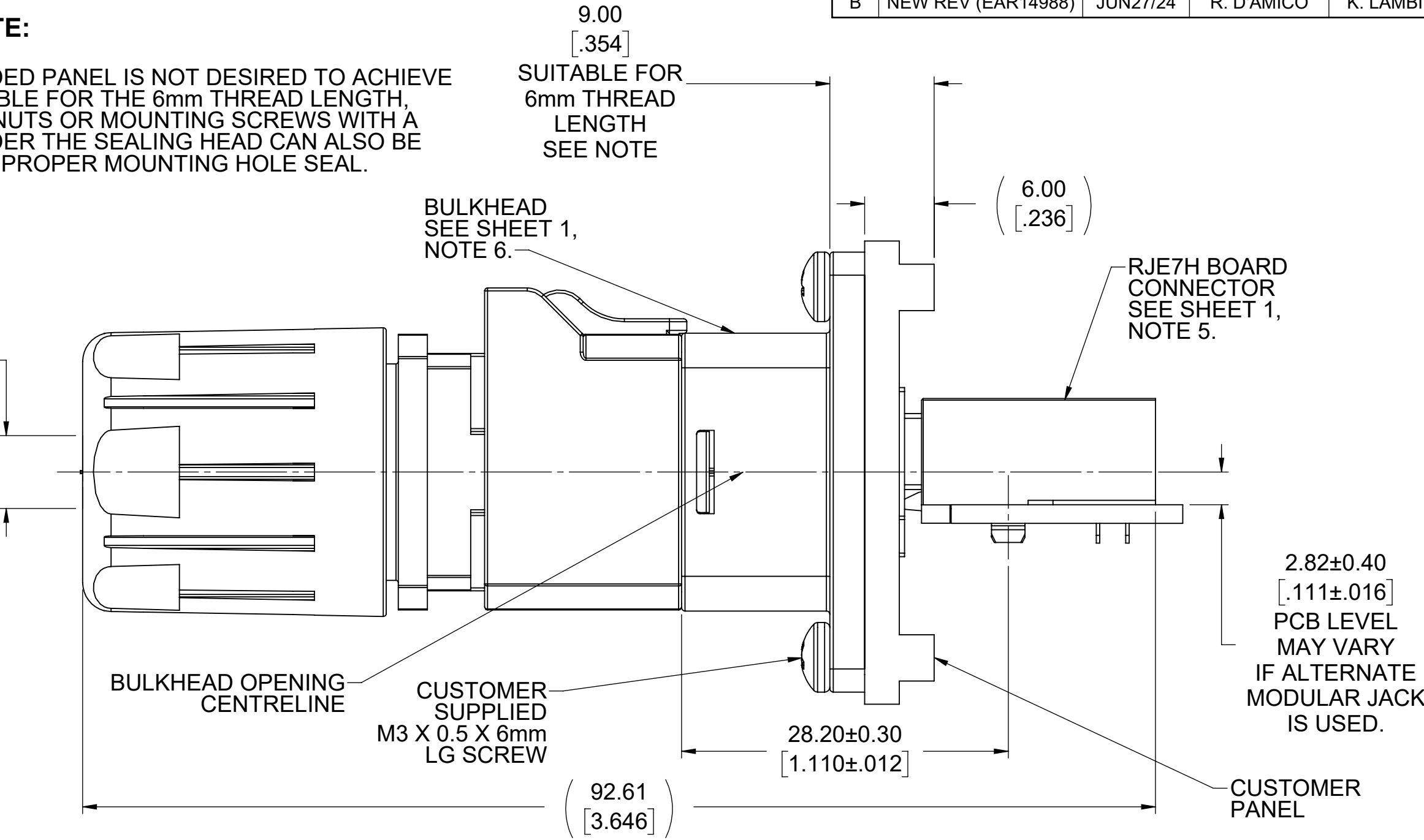
BULKHEAD PORT SPACING

APPLICATION NOTE:

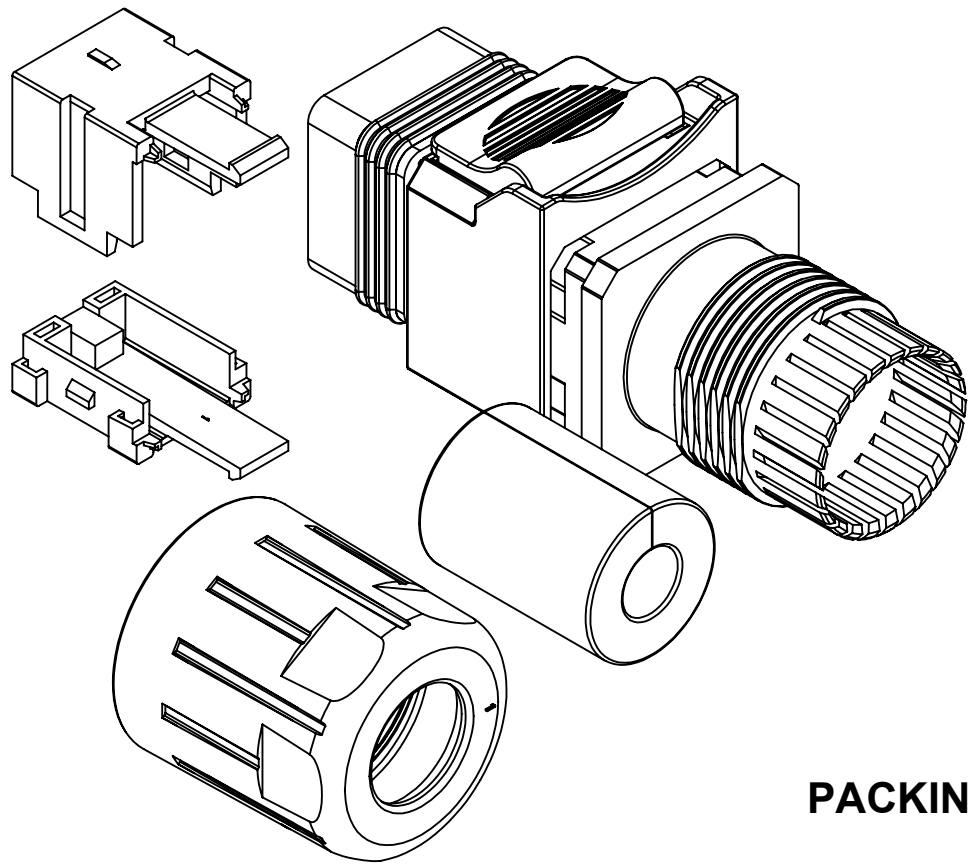
IF A CAST OR MOULDED PANEL IS NOT DESIRED TO ACHIEVE A BLIND HOLE SUITABLE FOR THE 6mm THREAD LENGTH, BLIND SEALED PEM NUTS OR MOUNTING SCREWS WITH A BUILT IN O-RING UNDER THE SEALING HEAD CAN ALSO BE USED TO ACHIEVE A PROPER MOUNTING HOLE SEAL.



6.00 TO 7.00
(.236 TO .276)
O.D. CABLE

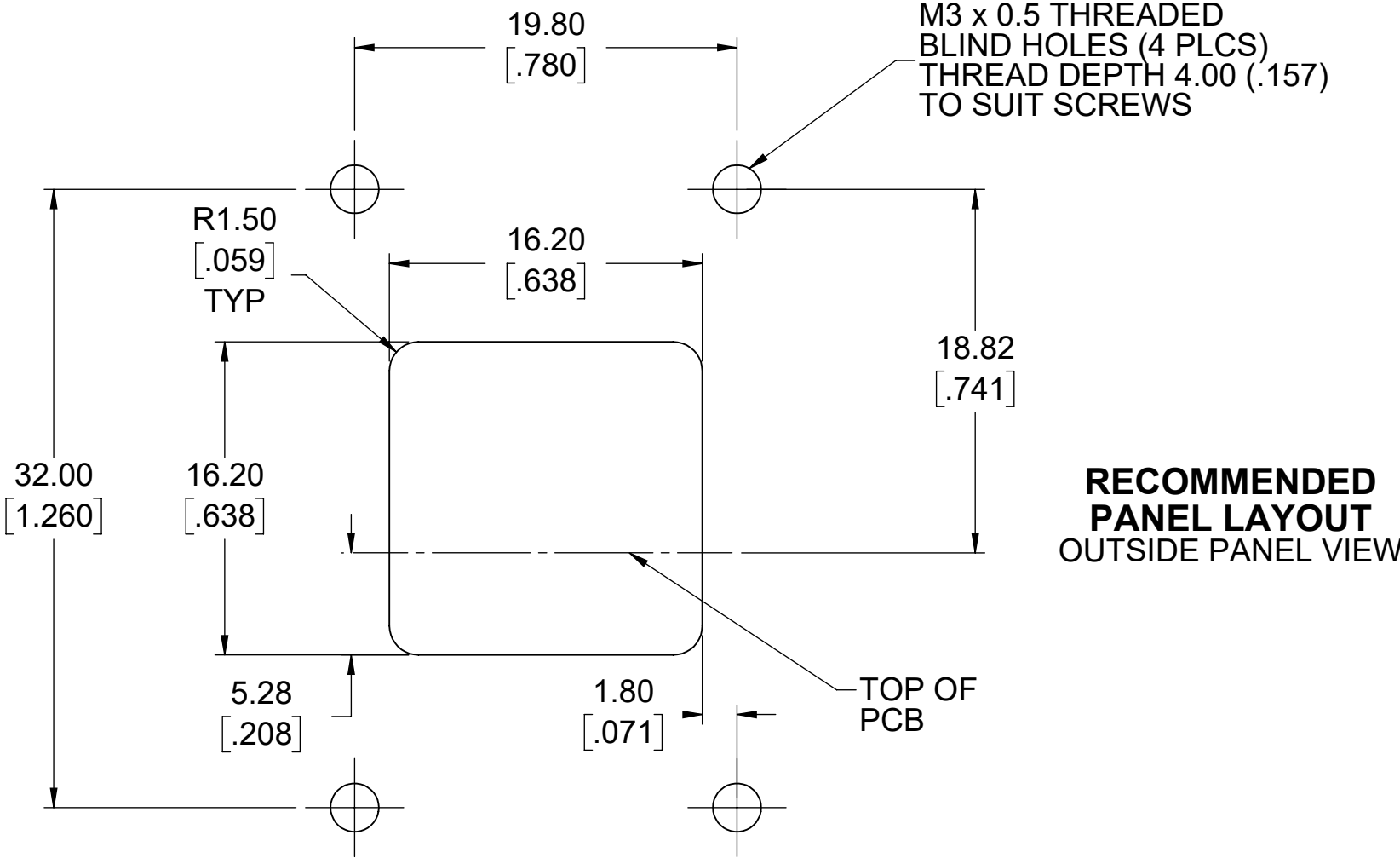


APPLICATION VIEWS



PACKING CONFIGURATION
NDH-R100

EACH OF THE ITEMS SHOWN ARE SUPPLIED BULK PACKED. EACH CARTON TO PROVIDE AN EQUAL NUMBER OF PARTS.



RECOMMENDED
PANEL LAYOUT
OUTSIDE PANEL VIEW

UNLESS SPECIFIED OTHERWISE	DRAWN	P.GOBUI	JAN07/22
PRIMARY UNITS	MILLIMETRES	CHECKED	K. LAMBIE
SECONDARY	INCHES	M.E. APP'D	
REFERENCE IN PARENTHESES		Q.A. APP'D	
GENERAL TOLERANCES		DWG APP'D	
1 DECIMAL PLACE		ENG NO.	
2 DECIMAL PLACES		RELEASE STATE	
3 DECIMAL PLACES		THIRD ANGLE PROJECTION	
ANGULAR DEGREES		DO NOT SCALE DRAWING	

Amphenol Canada Corp.
Commercial Products

NDH SERIES RJ HOOD KIT, TAB DOWN, IP67
RATING, RoHS COMPLIANT

DWG. NO.	P-NDH-R100	REV	B
CODE ID NO.	03554	DWG SIZE:	C
SCALE:	2.5:1	SHEET	2 OF 2