



Connectors > Power Connectors > Circular Power > Circular Power Connectors



Number of Positions: 6
Connector Product Type: **Lead Assembly**
Operating Voltage: **27000 VDC**
Connector System: **Wire-to-Wire**
Sealable: **No**

Features

Product Type Features

Connector Product Type	Lead Assembly
Connector System	Wire-to-Wire
Sealable	No
Connector & Contact Terminates To	Wire & Cable
Connector & Housing Type	Plug

Configuration Features

Number of Positions	6
---------------------	---

Electrical Characteristics

Operating Voltage	27000 VDC
-------------------	-----------

Body Features

Positive Stop Ferrule	Without
-----------------------	---------

Contact Features

Contact Type	Pin
--------------	-----

Mechanical Attachment

Panel Mount Feature Type	Retaining Ring
--------------------------	----------------

Usage Conditions

Operating Temperature Range	-55 – 125 °C[-67 – 257 °F]
-----------------------------	----------------------------



Operation/Application

Shielded	No
----------	----

Packaging Features

Packaging Quantity	1
Packaging Method	Package

Product Compliance

For compliance documentation, visit the product page on TE.com>

EU RoHS Directive 2011/65/EU	Compliant with Exemptions
EU ELV Directive 2000/53/EC	Compliant with Exemptions
China RoHS 2 Directive MIIT Order No 32, 2016	Restricted Materials Above Threshold
EU REACH Regulation (EC) No. 1907/2006	Current ECHA Candidate List: JAN 2025 (247) Candidate List Declared Against: JAN 2024 (240) SVHC > Threshold: Pb (3.7% in Component Part) Article Safe Usage Statements: Do not eat, drink or smoke when using this product. Wash thoroughly after handling. Recycle if possible and dispose of the article by following all applicable governmental regulations relevant to your geographic location.
Halogen Content	Not Yet Reviewed for halogen content
Solder Process Capability	Not applicable for solder process capability

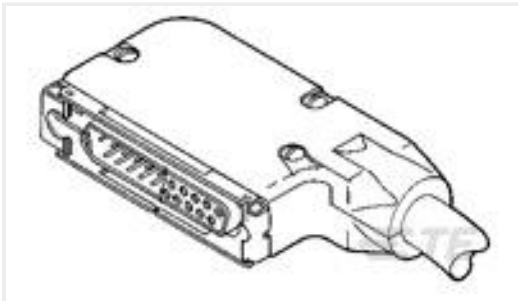
Product Compliance Disclaimer

This information is provided based on reasonable inquiry of our suppliers and represents our current actual knowledge based on the information they provided. This information is subject to change. The part numbers that TE has identified as EU RoHS compliant have a maximum concentration of 0.1% by weight in homogenous materials for lead, hexavalent chromium, mercury, PBB, PBDE, DBP, BBP, DEHP, DIBP, and 0.01% for cadmium, or qualify for an exemption to these limits as defined in the Annexes of Directive 2011/65/EU (RoHS2). Finished electrical and electronic equipment products will be CE marked as required by Directive 2011/65/EU. Components may not be CE marked. Additionally, the part numbers that TE has identified as EU ELV compliant have a maximum concentration of 0.1% by weight in homogenous materials for lead, hexavalent chromium, and mercury, and 0.01% for cadmium, or qualify for an exemption to these limits as defined in the Annexes of Directive 2000/53/EC (ELV). Regarding the REACH Regulation, the information TE provides on SVHC in articles for this part number is based on the latest European Chemicals Agency (ECHA) ‘Guidance on requirements for substances in articles’ posted at this URL: <https://echa.europa.eu/guidance-documents/guidance-on-reach>

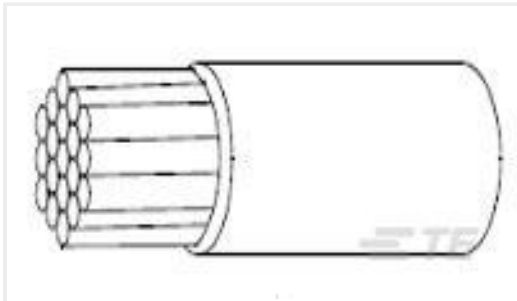
Customers Also Bought



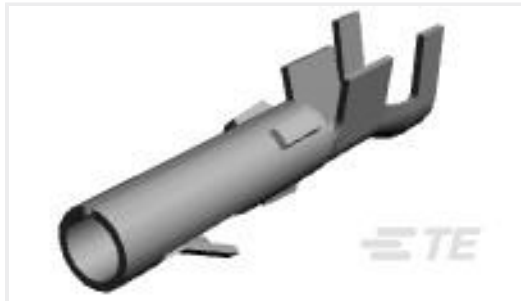
TE Part #416947-000
[CWT-6-W122-5](#)



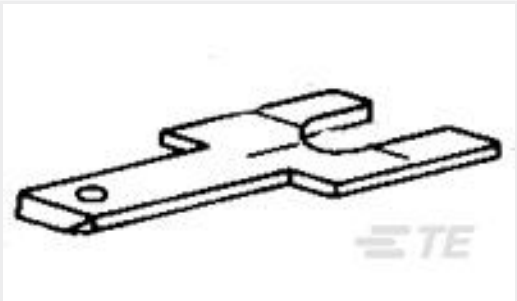
TE Part #5745652-3
[DIECAST STRAIN RELIEF KIT,SZ 2](#)



TE Part #557601-000
[22759/44-24-3](#)



TE Part #61117-7
[CMNL SOK 20-14 AUBR](#)



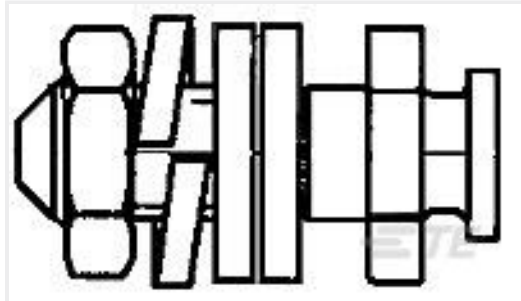
TE Part #62061-2
[110 FASTON TAB BR](#)



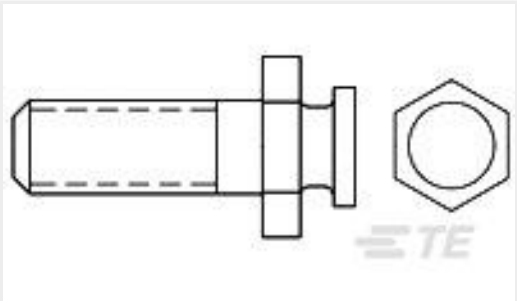
TE Part #CAT-FSS0002
[3/4BSP MALE X FEMALE WATER FLOW SWITCH](#)



TE Part #1757821-6
[AMPLIMITE,ASY,PLUG,FB,109,ZN,1, CONT](#)



TE Part #5206514-4
[SLIDING LOCK POST KIT CLEAR Z1](#)



TE Part #5206807-2
[SLIDE LOCK POST, ZN](#)



TE Part #EM7793-000
[S01-6-R](#)

Documents

Product Drawings
[LGH-6 PIN HV PLUG ASY](#)

English

CAD Files

[3D PDF](#)

3D

Customer View Model

[ENG_CVM_CVM_860267-1_R.2d_dxf.zip](#)

English

Customer View Model

[ENG_CVM_CVM_860267-1_R.3d_igs.zip](#)

English

Customer View Model

[ENG_CVM_CVM_860267-1_R.3d_stp.zip](#)

English

By downloading the CAD file I accept and agree to the [Terms and Conditions](#) of use.

Instruction Sheets



Instruction Sheet (U.S.)

English