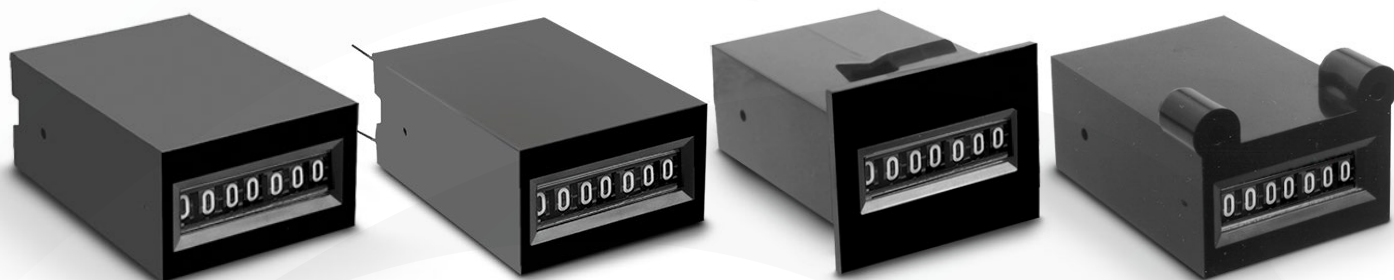


# 40 Series

## Electromechanical Totalizer



The model 40 is a low cost, non-reset totalizer, available with 7 figures (white on black background). A wide choice of operating voltages and mountings make this product adaptable to most applications. The Model 40 is an ideal solution for applications that require low cost and product reliability.

### Specifications

<b>Figures</b>	7 figures, white on black, 0.12" [3mm] high, 0.16" [4mm] with magnifying lens
<b>Reset</b>	Non-reset
<b>Speed</b>	600 counts/minute (min.50ms-on, 50ms-off) *on request* 1500 counts/minute (min 50ms-on, 50ms-off)
<b>Voltage</b>	5, 12 or 24 VDC (+10/-15% tolerance)
<b>Frequency</b>	50/60Hz
<b>Power</b>	1.4 watts AC, 1.0 watts DC (nominal)
<b>Mount</b>	Rear, behind the panel, snap-in, base or PCB mount
<b>Terminations</b>	(2)#22 AWG 221°F [105°C] wire leads, 10.5" [266.7mm] long
<b>Operating Life</b>	Beyond 3 million counts
<b>Temp. Range</b>	+23°F to +104°F [-5°C to + 40°C]
<b>Weight</b>	Less than 1oz [28g]

### Key Features

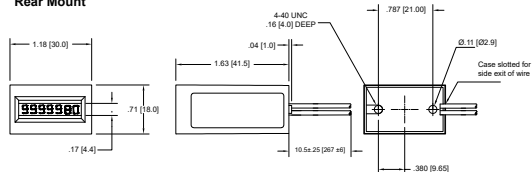
- Low cost
- Small size
- DC
- Options include:
  - Multiple mounting choices
  - Voltage ranges

### Applications

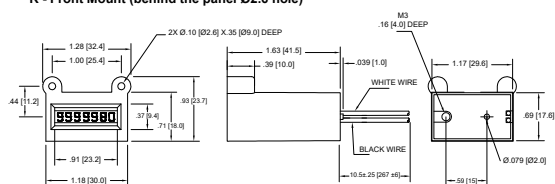
- Vending / gaming machines
- Photocopiers
- Items dispensed
- Office equipment

## Dimensions

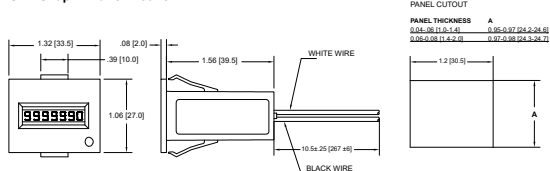
**Rear Mount**



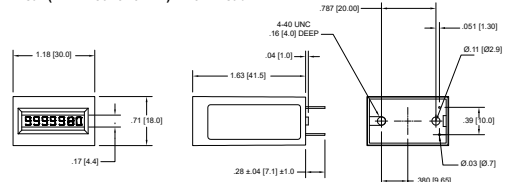
**R - Front Mount (behind the panel Ø2.6 hole)**



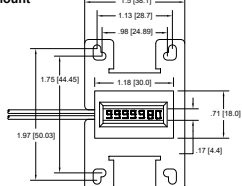
**SR - Snap-In Panel Mount**



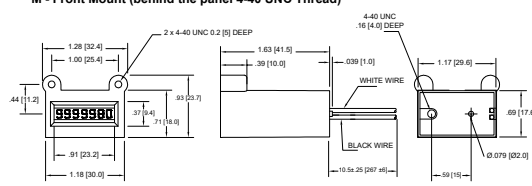
**T - Rear (PCB Mount 10mm) 4-40 Thread**



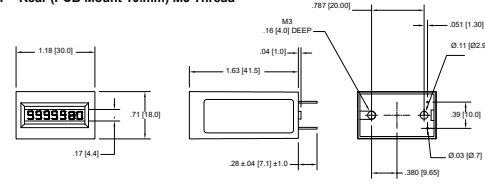
**V - Base Mount**



**M - Front Mount (behind the panel 4-40 UNC Thread)**



**P - Rear (PCB Mount 10mm) M3 Thread**



## Part Numbers

**Example:** X X - 40 1 7 X - XX

### Mounting

- M** Front Mount (behind the panel mount - 4-40 Thread)
- R** Front Mount (behind the panel mount - M3 Thread)
- SR** Snap-In Panel Mount
- T** Rear (PCB mount 10mm) 4-40 Thread
- P** Rear (PCB mount 10mm) M3 Thread
- V** Base Mount

### Voltage

- 8** 24 DC
- 9** 12 DC
- 10** 6 DC
- 11** 5 DC

### Model Number

- 40** Model number

### Reset

- 1** Non-reset

### Number of Figures

- 7** 7 figure

### Suffix

- A** Counter set at 0000000
- B** LSD is white
- C** Diode
- D** 32" Lead Wires

### CPS

- 10** CPS standard
- 25** CPS upon request

