



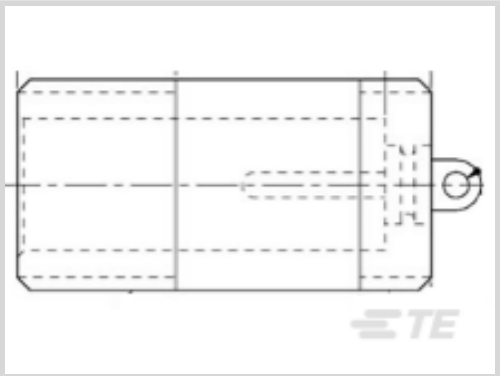
LGH

TE Internal #: 868092-1

1 Position Circular Connector, Cable-to-Cable, Sealable, Wire & Cable, Power & Signal, Plastic, Thermoset Plastic, 0 Power Positions

[View on TE.com >](#)

Connectors > Circular Connectors > Standard Circular Connectors



Number of Positions: 1

Connector System: **Cable-to-Cable**

Sealable: **Yes**

Connector & Contact Terminates To: **Wire & Cable**

Contact Current Rating (Max): **10 A**

Features

Product Type Features

Connector Product Type	Connector Assembly
Assembly Type	Electrical Connector
Prewired	No
Connector System	Cable-to-Cable
Sealable	Yes
Connector & Contact Terminates To	Wire & Cable
Circular Connector Type	Receptacle
Shell Type	All Plastic

Configuration Features

Keying & Polarized Position Locations	None
Factory Installed Backshell	Without
Number of Positions	1
Number of Power Positions	0
Number of Signal Positions	1
Contacts Preloaded	Yes

Electrical Characteristics

Operating Voltage	20000 VDC
-------------------	-----------

Body Features



Environmental Protection	Without
Primary Product Color	Black
Fluid Type	Aviation Fuel, Hydraulic Fluid, Lubricating Oil, Water
Feedthrough Type	No
Shell Base Material	Plastic
Circular Connector Insulation Material Type	Thermoset Plastic
Hermetically Sealed	No
Contact Features	
Contact Quantity (Size 16)	1
Contact Current Rating (Max)	10 A
Reverse Gender	No
Circular Connector Contact Type	Pin
Termination Features	
Termination Method to Wire & Cable	Solder
Mechanical Attachment	
Panel Mount Feature	Without
Mating Retention Type	Threaded Coupling
PCB Mount Retention	Without
Panel Mount Feature Type	Screw Mount
Mating Alignment	Without
PCB Mount Alignment	Without
Mating Retention	With
Dimensions	
Wire Size	16 AWG
Usage Conditions	
Fluid Resistance	Immersion
Operating Temperature Range	-55 – 125 °C[-67 – 257 °F]
Operation/Application	
Durability Rating	500 Cycles
Circuit Application	Power & Signal
Shielded	No



Packaging Features

Packaging Quantity	1
--------------------	---

Other

Field Serviceable	Yes
-------------------	-----

Product Compliance

For compliance documentation, visit the product page on TE.com>

EU RoHS Directive 2011/65/EU	Compliant with Exemptions
EU ELV Directive 2000/53/EC	Compliant with Exemptions
China RoHS 2 Directive MIIT Order No 32, 2016	Restricted Materials Above Threshold
EU REACH Regulation (EC) No. 1907/2006	Current ECHA Candidate List: JAN 2025 (247) Candidate List Declared Against: JAN 2024 (240) SVHC > Threshold: Pb (4% in Contact/Component) <b>Article Safe Usage Statements:</b> Do not eat, drink or smoke when using this product. Wash thoroughly after handling. Recycle if possible and dispose of the article by following all applicable governmental regulations relevant to your geographic location.
Halogen Content	Not Yet Reviewed for halogen content
Solder Process Capability	Not applicable for solder process capability

Product Compliance Disclaimer

This information is provided based on reasonable inquiry of our suppliers and represents our current actual knowledge based on the information they provided. This information is subject to change. The part numbers that TE has identified as EU RoHS compliant have a maximum concentration of 0.1% by weight in homogenous materials for lead, hexavalent chromium, mercury, PBB, PBDE, DBP, BBP, DEHP, DIBP, and 0.01% for cadmium, or qualify for an exemption to these limits as defined in the Annexes of Directive 2011/65/EU (RoHS2). Finished electrical and electronic equipment products will be CE marked as required by Directive 2011/65/EU. Components may not be CE marked. Additionally, the part numbers that TE has identified as EU ELV compliant have a maximum concentration of 0.1% by weight in homogenous materials for lead, hexavalent chromium, and mercury, and 0.01% for cadmium, or qualify for an exemption to these limits as defined in the Annexes of Directive 2000/53/EC (ELV). Regarding the REACH Regulation, the information TE provides on SVHC in articles for this part number is based on the latest European Chemicals Agency (ECHA) ‘Guidance on requirements for substances in articles’ posted at this URL: <https://echa.europa.eu/guidance-documents/guidance-on-reach>

Customers Also Bought





TE Part #DT04-2P  
REC, 2P, GRY, N



TE Part #CAT-D48-ST273  
DEUTSCH Solid Contacts



TE Part #CAT-D487-W416  
Wedgelocks: DEUTSCH DT



TE Part #DT06-2S  
PLG, 2P, GRY, N



TE Part #CAT-AM71-CH8172  
AMP SUPERSEAL 1.5MM,  
CONNECTOR HOUSING



TE Part #281934-2  
SINGLE WIRE SEAL



TE Part #114017-ZZ  
SEALING PLUG, SIZE 12/16, WHT

Documents

Product Drawings  
LGH-1 RECEPTACLE

English

CAD Files  
3D PDF

3D

Customer View Model  
[ENG\\_CVM\\_CVM\\_868092-1\\_F.2d\\_dxf.zip](#)

English

Customer View Model  
[ENG\\_CVM\\_CVM\\_868092-1\\_F.3d\\_igs.zip](#)

English

Customer View Model  
[ENG\\_CVM\\_CVM\\_868092-1\\_F.3d\\_stp.zip](#)

English

By downloading the CAD file I accept and agree to the [Terms and Conditions](#) of use.

Datasheets & Catalog Pages  
1308940\_Sec9\_lghlead

English