

# S Series

## Slide Switches



### Agency Approvals

Agency	Agency File Number
US	E42363

### Specifications

<b>Contact Rating</b>	Q contact material (S1XX, S2XX models): 6 amps @ 125 V AC; 6 amps @ 250 V AC; 1 amp @ 125 V DC . (S5XX, S6XX models): 12 amps @ 125 V AC; 6 amps @ 250 V AC; 1 amp @ 125 V DC . (S7XX, S8XX models): 15 amps @ 125 V AC; 6 amps @ 250 V AC .
<b>Electrical Life</b>	10,000 make-and-break cycles at full load.
<b>Contact Resistance</b>	Below 10 m $\Omega$ typ. initial @ 2-4 V DC, 100 mA, for both silver and gold plated contacts.
<b>Insulation Resistance</b>	10 <sup>9</sup> $\Omega$ min.
<b>Dielectric Strength</b>	1,000 Vrms min. @ sea level.
<b>Operating Temperature</b>	-30°C to 65°C
<b>Storage Temperature</b>	-30°C to 85°C

### Description

Designers of portable tools, small appliances and floor care products turn to the S series switch when they need a resilient, long-lasting switch that can withstand harsh environments. The S series switch comes with enclosed housing, optional reversing option, PC or snap-in panel mounting and a range of 6 to 15 amps.

### Features & Benefits

- 6 to 15 AMPS
- Enclosed housing
- PC and Snap-in panel mounting
- Reversing option
- RoHS compliant

### Applications

- Portable tools
- Small appliances
- Floor care products

### Materials

<b>Housing &amp; Top Plate</b>	6/6 nylon (UL 94 V-2), black.
<b>Actuator</b>	6/6 nylon (UL 94 V-2), black (standard).
<b>Contacts</b>	Q contact material: Copper, silver plated.
<b>Terminals</b>	
<b>Contact Spring</b>	Music wire or stainless steel.
<b>Terminal Seal</b>	Epoxy.

#### Notes:

Any models supplied with Q, B or G contact material are RoHS compliant. Specifications and materials listed above are for switches with standard options. For information on specific and custom switches, consult Customer Service Center.



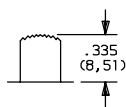
# S Series

## Slide Switches

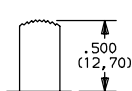


### Actuator

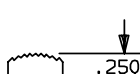
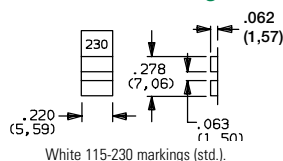
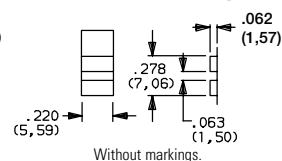
03 0.335" High



04 0.500" High



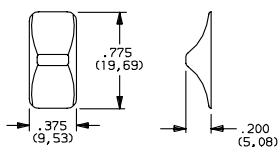
09 0.250" High

12 Screwdriver Slot  
(with marking)13 Screwdriver Slot  
(without marking)

#### Notes:

Standard actuator color is black, other colors available, consult Customer Service Center. Alternate heights are available with '03, 04 and 09' actuators, consult Customer Service Center. Models with S2 mounting style, subtract 0.090 (2.29). Actuators '12' and '13' are available with DPST and DPDT models only.

### C2; C3; C5 Snap-On Cap



**Note:** Available with S2 mounting style only.

Option Code 2	C1-CT Cap Colors
C2	Black
C3	Red
C5	Yellow

**Notes:** Actuator finish: matte. If no color is specified, black will be supplied. Colored actuator caps may also be ordered separately and user installed, see page 5.

### Detent

1 With Detent

Standard with all maintained models: S101, S102, S201, S202, S602, S701, S702, and S802.

2 Without Detent

Standard with all momentary models: S112.

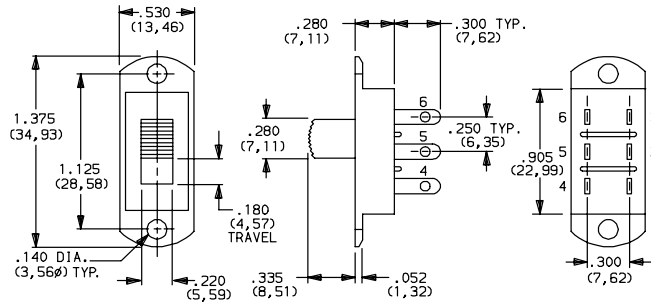
# S Series

## Slide Switches

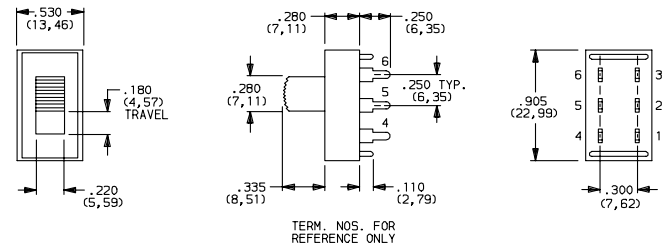


### Mounting Styles

#### SS Panel with Mounting Ears S202031SS03Q DPDT



#### MS PC Thru-hole S202031MS02Q DPDT



#### Available with:

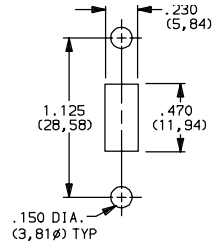
**Models:** S101, S102, S112, S201, S202, S602

**Terminations:** 02, 04 and 08

**Actuators:** 03, 04, 09, 12' and 13'. '12 and 13 actuators available with S201, S202 and S602 models only.

**PC Mounting:** For mounting information, see TERMINATIONS section.

#### Panel Mounting



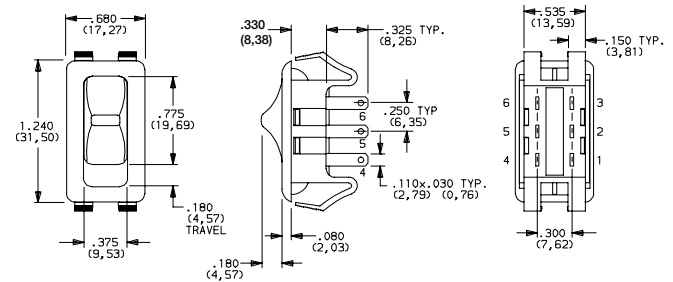
#### Available with:

**Models:** S101, S102, S112, S201, S202 and S602

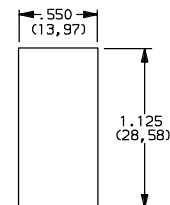
**Terminations:** All except 08

**Actuators:** 03, 04, 09, 12' and 13'. '12 and 13 actuators not available with S1XX models.

#### S2 Snap-in Panel S802C21S207Q DPDT



#### Panel Mounting



**PANEL THICKNESS:**  
.020(0,57)–.200(5,08)

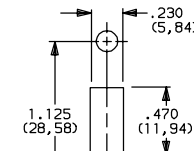
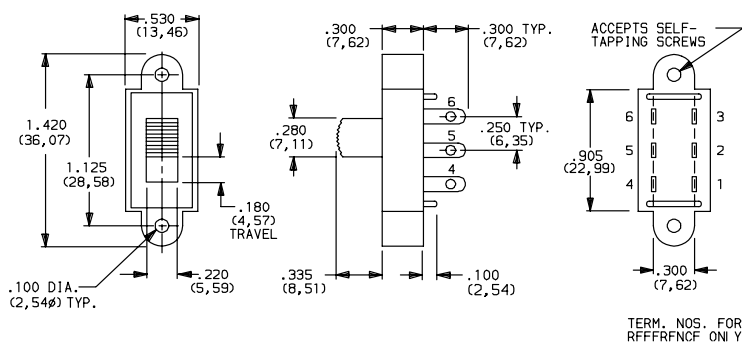
#### Available With:

**Models:** S701, S702, and S802

**Terminations:** 04, 07, 57 and WC

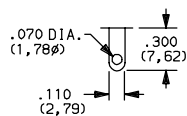
**Actuators:** C2, C3, C5 and 03

## Panel Mounting

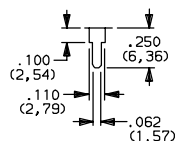


**Available with:**  
**Models:** S201, S202, and S602  
**Terminations:** All  
**Actuators:** 03, 04 and 12.

### 03 Solder Lug with Hole

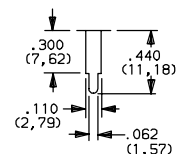


## 02 PC Thru-hole



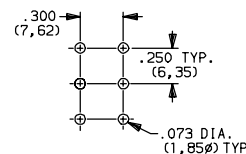
Recommended with 'MS' mounting style only.

#### 04 PC Thru-hole

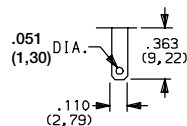


Recommended with double pole models only.

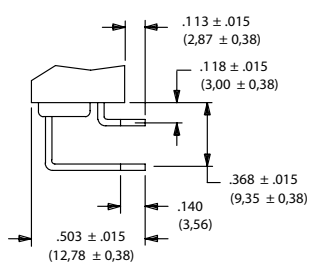
## PC Mounting 02 & 04 Terminations



## 07 Quick Connect

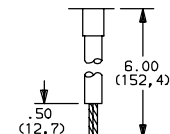


## 08 PC Thru-hole



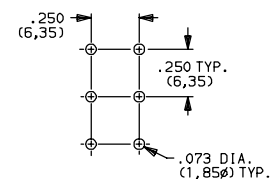
MS mounting style only.

### WC Wire Lead



18 AWG wire for S1XX and S2XX models. 16 AWG wire for all other models. Black wire standard, other colors and lengths available, consult Customer Service Center. UL style 1015.

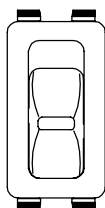
## PC Mounting 08 Terminations with MS Mounting Style



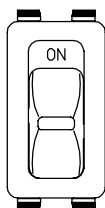
**Notes:** All terminals on S1XX, S2XX and S6XX models are 0.020 (0.51) thick; all terminals on S7XX and S8XX models are 0.031 (0.79) thick.

## Top Plate Markings

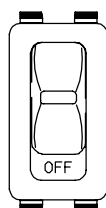
**None No Markings**



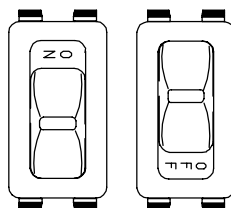
### D On-Off



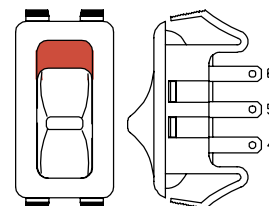
## L On



### M On-Off



### N Red Rectangle on One End



**Note:** Orientation of actuator markings and terminals.

**Notes:** Top plate markings are available with "S2" mounting style only. The marking color on all top plates with marking options "D, L and M" is white, standard. (except white top plates: marking color is black, standard). The marking color on all top plates with "N" marking option is red, standard. Other marking colors are available, consult Customer Service Center.

# S Series

## Slide Switches



### Contact Material

Option Code	Contact Material	Ratings	
B	Gold <sup>1</sup>	Low Level / Dry Circuit	0.4 VA max. @ 20 V AC or DC max.
Q	Silver <sup>2</sup>	Power	S1XX, S2XX models: 6 amps @ 125 V AC; 6 amps @ 250 V AC; 1 amp @ 125 V DC  S6XX models: 12 amps @ 125 V AC; 6 amps @ 250 V AC; 1 amp @ 125 V DC  S7XX, S8XX models: 15 amps @ 125 V AC; 6 amps @ 250 V AC
G	Gold over Silver <sup>3</sup>	Low Level / Dry Level Circuit or Power	S1XX, S2XX models: 0.4 VA max. @ 20 V AC or DC max. or 6 amps @ 125 V AC; 6 amps @ 250 V AC; 1 amp @ 125 V DC  S6XX models: 0.4 VA max. @ 20 V AC or DC max. or 12 amps @ 125 V AC; 6 amps @ 250 V AC; 1 amp @ 125 V DC  S7XX, S8XX models: 0.4 VA max. @ 20 V AC or DC max. or 15 amps @ 125 V AC; 6 amps @ 250 V AC

**Notes:** See Technical Data section of this catalog for RoHS compliant and compatible definitions and specifications.

**1. Contacts & Terminals:** Copper, with gold plate over nickel plate.

**2. Contacts & Terminals:** Copper, silver plated (standard with all termination options).

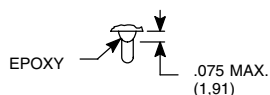
**3. Contacts & Terminals:** Copper, with gold plate over nickel plate over silver plate.

Any models supplied with B, Q or G contact material are RoHS compliant.

All models with all options when ordered with 'G' or 'Q' contact material. 'G' contact material is equivalent to both 'B' and 'Q' contact materials.

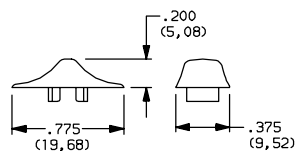
### Seal

#### E Epoxy Seal



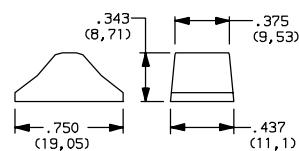
### Available Hardware

#### Cap , C2; C3 actuators



**Part No.**  
 121160100 WHITE  
 121160200 BLACK  
 121160300 RED  
**Material:** 6/6 Nylon  
**Finish:** Matte

#### Cap, 03 actuators



**Part No.**  
 121000101 WHITE  
 121000102 BLACK  
 121000103 RED  
**Material:** 6/6 Nylon  
**Finish:** Gloss

**Notes:** Other colors available, consult Customer Service Center.

**Disclaimer Notice** - Information furnished is believed to be accurate and reliable. However, users should independently evaluate the suitability of and test each product selected for their own applications. Littelfuse products are not designed for, and may not be used in, all applications. Read complete Disclaimer Notice at <http://www.littelfuse.com/disclaimer-electronics>.