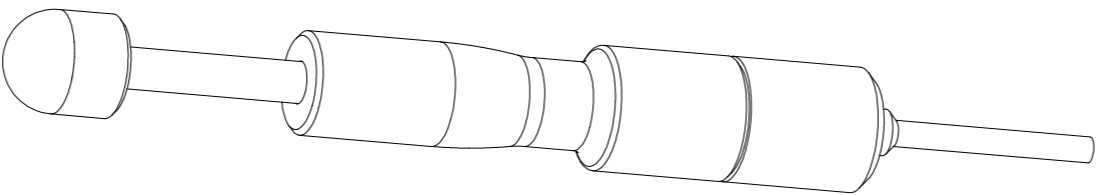
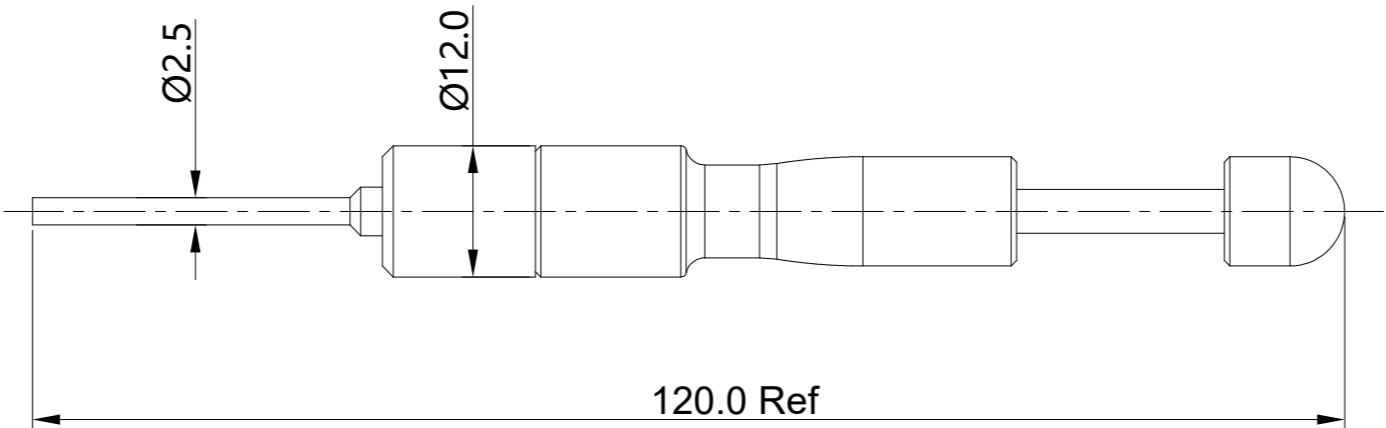


REVISIONS					
REV	ECO	DESCRIPTION	DATE	BY	APPR
A1	-	RELEASED DRAWING	Aug-14-2023	LUCAS	TOMMY



- NOTES: UNLESS OTHERWISE SPECIFIED
- 1.MATERIAL:ALUMINIUM ALLOY; COLOR: BLACK.
 - 2. ROHS COMPLIANT.
 - 3.USE FOR ATS 26 POS RECEPTACLE.
 - 4.ALL DIMENSIONS ARE FOR REFERENCE USE ONLY.

QUANTITY	PART NUMBER	DESCRIPTION	ITEM
MATERIALS LIST			
UNLESS OTHERWISE SPECIFIED 1) All dimensions are in metric(mm). 2) Tolerances are as follows: 1 PL DEC ±0.30 2 PL DEC ±0.15 3 PL DEC ±0.08 3) Note reference =		SIGNATURES DRAWN: LUCAS.CHAI CHECKED: ORION.LI ENGINEER: APPROVAL: TOMMY.XIE CUSTOMER:	DATE Aug-14-2023 Aug-16-2023 Aug-18-2023
MATERIAL SPECIFICATIONS: WEIGHT : 20.8g		Amphenol Sine Systems - www.amphenol-sine.com 44724 Morley Drive Clinton Township, MI 48036	
PROCESS SPECIFICATIONS:		ECO-MATE,EXTRACTION TOOL FOR 20# CONTACT,ATS	
NEXT ASS'Y:		THIS DRAWING IS SUPPLIED FOR INFORMATION ONLY. DESIGN FEATURES, SPECIFICATIONS AND PERFORMANCE DATA SHOWN HEREON ARE THE PROPERTY OF THE AMPHENOL CORPORATION. NO RIGHTS OF REPRODUCTION ARE IMPLIED. ALL DIMENSIONS ARE SUBJECT TO NORMAL MANUFACTURING VARIATIONS.	
		SIZE B	TYPE C-
		DWG NO: QXRT20-ATS26P	REVISION A1
		SCALE: NONE	SHEET 1 OF 1