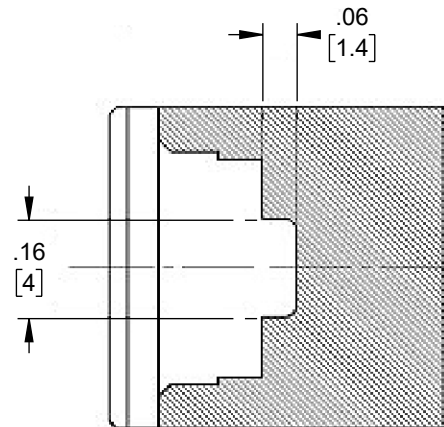
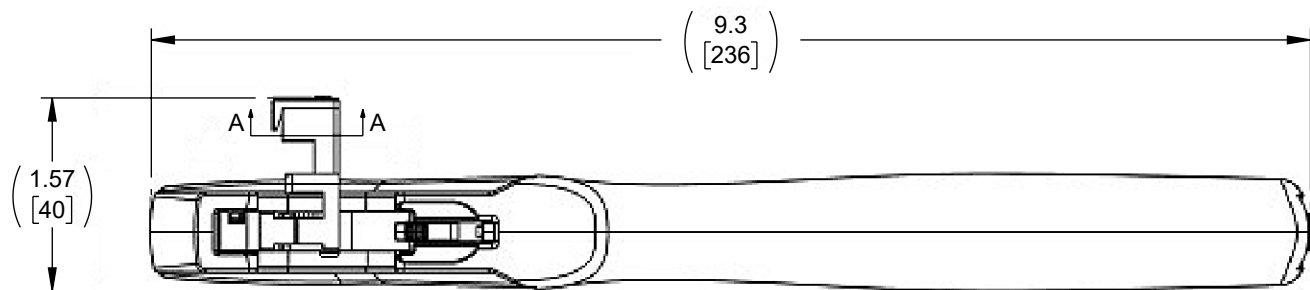
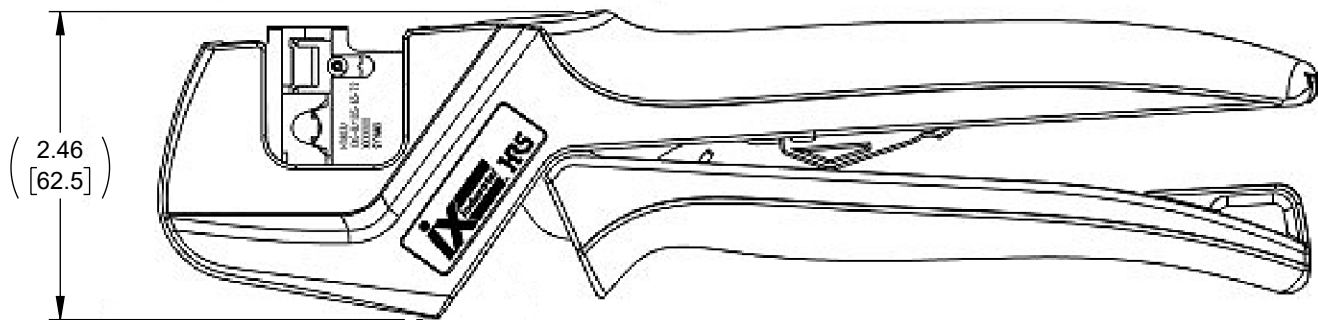


THE INFORMATION CONTAINED IN THIS DRAWING IS THE SOLE
PROPERTY OF L-COM, INC. ANY REPRODUCTION IN PART OR WHOLE
WITHOUT THE WRITTEN PERMISSION OF L-COM, INC. IS PROHIBITED.

REVISION					
ZONE	REV	DESCRIPTION	DATE	CHANGED BY	APPROVED
	A	INITIAL RELEASE	04/28/2023	KGLEBOVA	GUTTADAURO




SECTION A-A
NTS



NOTES:

1. THIS DRAWING SHOWS HT803/1XG-8/10S-63-72
2. PRODUCT SHALL BE INDIVIDUALLY PACKAGED IN ACCORDANCE WITH L-COM SPECIFICATION PS-0031

UNLESS OTHERWISE SPECIFIED, DIMENSIONS ARE IN INCHES [mm]		APPROVALS		DATE		<div><div><div>L-com™</div><div>an INFINITI® brand</div></div><div>50 High Street, West Mill, North Andover, MA 01845 USA. Phone: 1.800.341.5266 1.978.682.6936</div></div>	
OVERALL CABLE LENGTH TOLERANCE: ≤12 [305] = +1 [25] / -0 >12 [305] ≤60 [1524] = +2 [51] / -0 >60 [1524] ≤120 [3048] = +4 [102] / -0 >120 [3048] ≤300 [7620] = +6 [152] / -0 >300 [7620] = +5% / -0		DRAWN BY KGLEBOVA		04/13/2023			
		CHECKED BY BPUCHASKI		04/17/2023		CATEGORY TELECOM / MODULAR	
		APPROVED BY GUTTADAURO		04/21/2023			
		ALL OTHER DIMENSIONAL TOLERANCES: .X = ± .2 [5] FRACTIONS .XX = ± .02 [.5] ± 1/32 .XXX = ± .005 [.13] ANGLES ± 1°		CONFIGURATION DETAILS OF UNDIMENSIONED FEATURES MAY VARY		PRODUCT DESCRIPTION IX INDUSTRIAL CRIMP TOOL FOR IXP-C2628RA, IXP-C2426RA AND IXP-SRA RIGHT ANGLED PLUGS, HAND TOOL	
THIRD-ANGLE PROJECTION <div></div>		COLOR VARIATIONS MAY OCCUR		SIZE A	CAGE CODE 43321	ITEM NO. HT-IXRAP	REV. A
				SCALE: NONE		CAD FILE: ht-ixrap.SLDDRW	
						SHEET 1 OF 1	