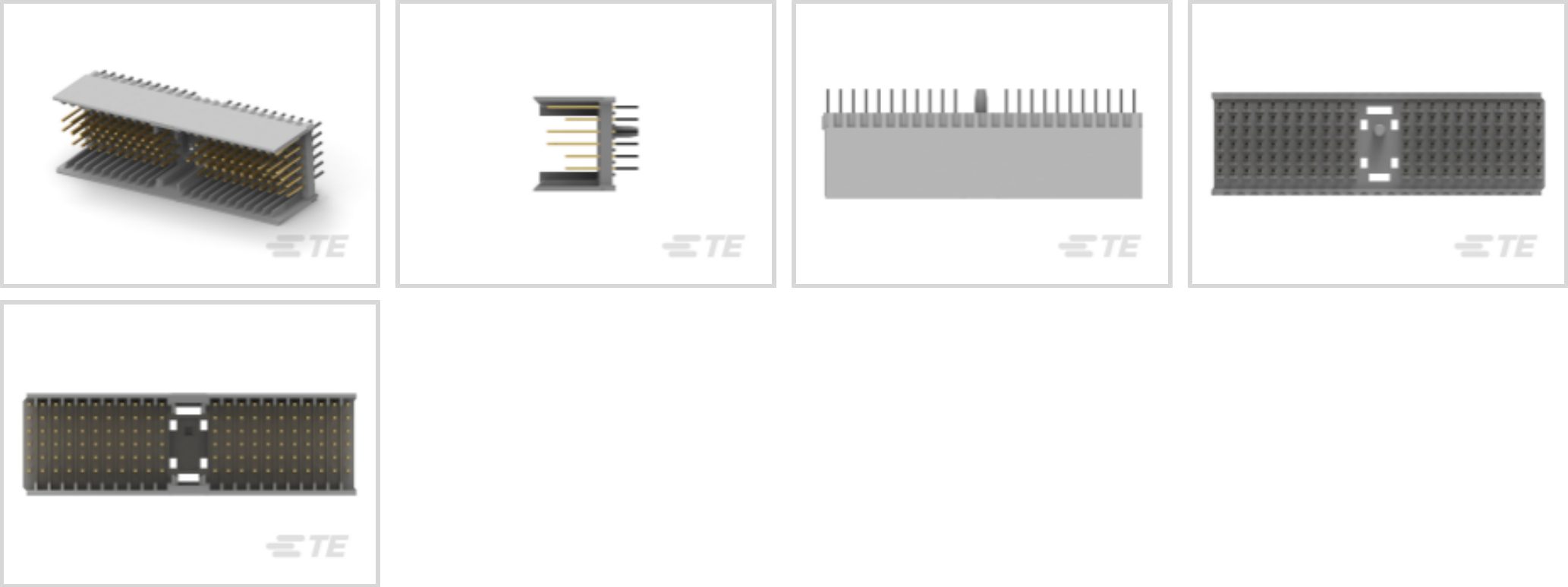




Connectors > PCB Connectors > Backplane Connectors > Hard Metric Backplane Connectors >

Hard Metric Male Connector: Traditional Backplane, Mezzanine, 2mm



PCB Connector Type: **PCB Mount Header**

Number of Columns: **25**

Number of Rows: **6**

Backplane Architecture: **Traditional Backplane**

Number of Positions: **132**

[All Hard Metric Male Connector: Traditional Backplane, Mezzanine, 2mm \(124\)](#)

Features

Product Type Features

Connector & Contact Terminates To	Printed Circuit Board
Connector System	Board-to-Board
PCB Connector Type	PCB Mount Header
Sealable	No

Configuration Features

Number of Columns	25
Number of Rows	6
Backplane Architecture	Traditional Backplane
Number of Positions	132
PCB Mount Orientation	Vertical

Body Features

Primary Product Color	Gray
-----------------------	------



Contact Features

CompactPCI Designation	None
Contact Type	Pin

Mechanical Attachment

Connector Mounting Type	Board Mount
-------------------------	-------------

Housing Features

Centerline (Pitch)	2 mm [.078 in]
--------------------	----------------

Usage Conditions

Operating Temperature Range	-55 – 125 °C [-67 – 257 °F]
-----------------------------	-----------------------------

Product Compliance

For compliance documentation, visit the product page on TE.com>

EU RoHS Directive 2011/65/EU	Compliant
EU ELV Directive 2000/53/EC	Compliant
China RoHS 2 Directive MIIT Order No 32, 2016	No Restricted Materials Above Threshold
EU REACH Regulation (EC) No. 1907/2006	Current ECHA Candidate List: JAN 2025 (247) Candidate List Declared Against: JAN 2025 (247) Does not contain REACH SVHC
Halogen Content	Not Low Halogen - contains Br or Cl > 900 ppm.
Solder Process Capability	Not applicable for solder process capability

Product Compliance Disclaimer

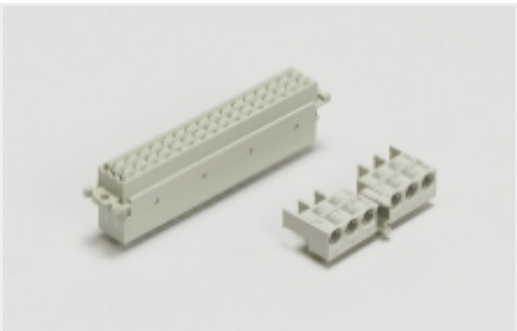
This information is provided based on reasonable inquiry of our suppliers and represents our current actual knowledge based on the information they provided. This information is subject to change. The part numbers that TE has identified as EU RoHS compliant have a maximum concentration of 0.1% by weight in homogenous materials for lead, hexavalent chromium, mercury, PBB, PBDE, DBP, BBP, DEHP, DIBP, and 0.01% for cadmium, or qualify for an exemption to these limits as defined in the Annexes of Directive 2011/65/EU (RoHS2). Finished electrical and electronic equipment products will be CE marked as required by Directive 2011/65/EU. Components may not be CE marked. Additionally, the part numbers that TE has identified as EU ELV compliant have a maximum concentration of 0.1% by weight in homogenous materials for lead, hexavalent chromium, and mercury, and 0.01% for cadmium, or qualify for an exemption to these limits as defined in the Annexes of Directive 2000/53/EC (ELV). Regarding the REACH Regulation, the information TE provides on SVHC in articles for this part number is based on the latest European Chemicals Agency (ECHA) ‘Guidance on requirements for substances in articles’ posted at this URL: <https://echa.europa.eu/guidance-documents/guidance-on-reach>

Compatible Parts

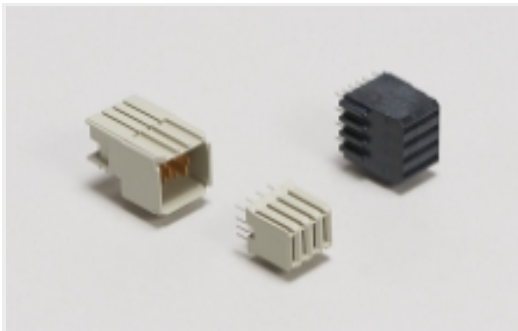


TE Part # 5352068-1
Z-PACK/A RAF 110P

Also in the Series | Z-PACK 2mm HM



Backplane Connector Housings(4)



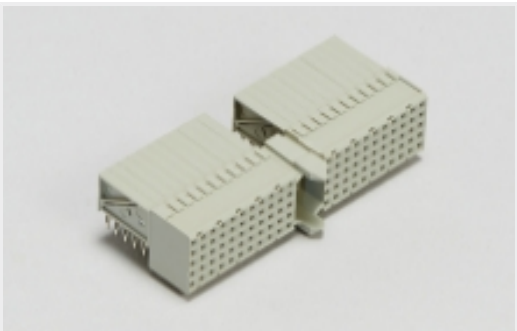
Backplane Power Connectors(1)



Connector Caps & Covers(62)



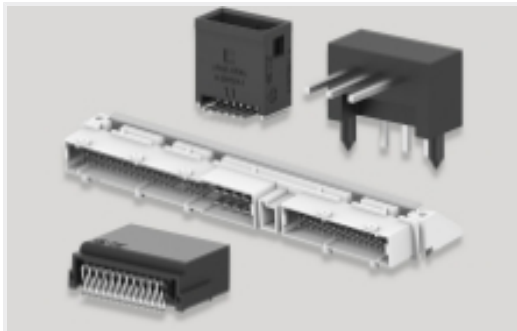
Connector Contacts(2)



Hard Metric Backplane Connectors
(265)



Insertion & Extraction Tools(2)



PCB Headers & Receptacles(46)



Rectangular Power Connectors(46)

Customers Also Bought



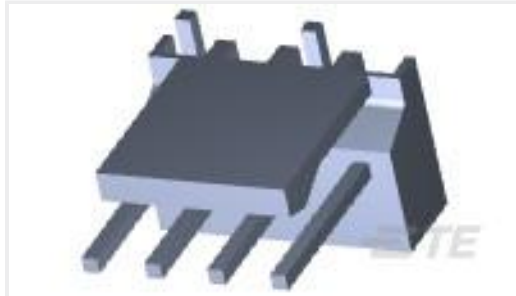
TE Part #816506-SF
RN114-4-02-1M5



TE Part #292303-1
Std USB Type A, R/A, T/H



TE Part #640456-8
08P MTA100 HDR ASSY F/L SQ STR



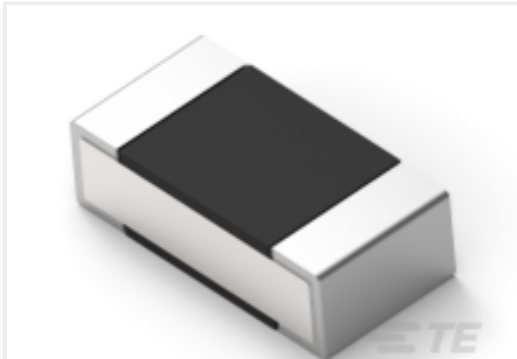
TE Part #3-647168-4
04P MTA100 HDR ASSY SM 30AU LF



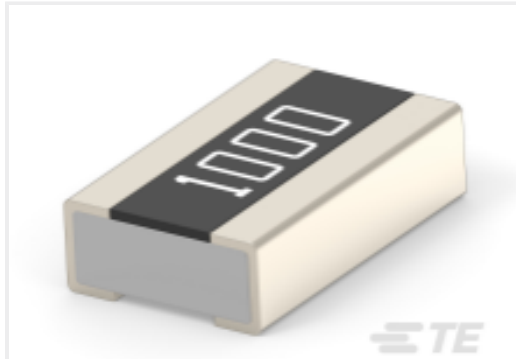
TE Part #5-1814832-2
SMA Str PCB Skt GZD



TE Part #4-1827253-8
.5FHP05H,220,S,GIG,08/Sn,TR,NSYes



TE Part #1-2176308-5
RP 1E 0.1W 187K 0.1% 25PPM 5K RL



TE Part #2-2176554-1
3430 A2 1% 6R2 150ppm 1k RL



Documents

Product Drawings

Z-PACK A HEADER 132P

English

CAD Files

3D PDF

3D

Customer View Model

ENG_CVM_CVM_6345235-1_A.2d_dxf.zip

English

Customer View Model

ENG_CVM_CVM_6345235-1_A.3d_igs.zip

English

Customer View Model

ENG_CVM_CVM_6345235-1_A.3d_stp.zip

English

By downloading the CAD file I accept and agree to the [Terms and Conditions](#) of use.

Product Specifications

Product Specification

English